



FUSE HOLDER

RT18-32-1

Din mount + LED indication 10 x 38 mm
Fuse holder 1
Pole



FUSE HOLDER

RT18-32-2

Din mount + LED indication
10 x 38 mm Fuse holder 2
Pole



FUSE HOLDER

KCF-2N-32

Din mount 1P + N 10 x 38 mm Fuse
holder 2 Pole



FUSE HOLDER

RT18-32-3

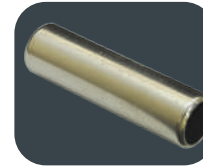
Din mount + LED indication
10 x 38 mm Fuse holder 3
Pole



CERAMIC FUSES

F1038

10 x 38 mm Ceramic Fuse
Available in 1, 2, 4, 6, 10, 16, 20, 25 &
32 Amp *Please Specify



NEUTRAL LINK

F1038-NL

10 x 38 mm Cylindrical Neutral Link



GLASS FUSES

M500 5 x 20 glass fuse Available in 1, 2, 3, 4, 5, 6, 7, 8, 10, 15, 20A *Please Specify

M600 6,3 x 30 glass fuse Available in 1, 2, 3, 4, 5, 6, 7, 8, 10, 15, 20A *Please Specify



FUSE HOLDER

M113

13mm Panel Mount Fuse Holder 5 x 20



FUSE HOLDER

M115

15mm Panel Mount Fuse Holder 6,3 x 30



DC FUSE HOLDER

KCF2-25-1	1 Pole 1000VDC
KCF2-25-2	2 Pole 1000VDC
KCF2-25-3	3 Pole 1000VDC
KCF2-25-4	4 Pole 1000VDC



DC FUSES

PVCF10-101	1A 1000VDC Fuse
PVCF10-102	2A 1000VDC Fuse
PVCF10-103	3A 1000VDC Fuse
PVCF10-104	4A 1000VDC Fuse
PVCF10-105	5A 1000VDC Fuse
PVCF10-106	6A 1000VDC Fuse
PVCF10-10	10A 1000VDC Fuse
PVCF10-12	12A 1000VDC Fuse
PVCF10-15	15A 1000VDC Fuse
PVCF10-20	20A 1000VDC Fuse
PVCF10-25	25A 1000VDC Fuse



DIN RAIL FUSE HOLDERS (10 x 38 CERAMIC FUSE)

KCF10-32-1

32A 1 Pole Din Fuse Holder with indication



DIN RAIL FUSE HOLDERS (14 x 51 CERAMIC FUSE)

KCF2-51-1

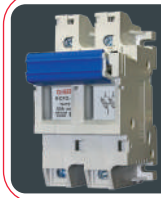
63A 1 Pole Din Fuse Holder



DIN RAIL FUSE HOLDERS (10 x 38 CERAMIC FUSE)

KCF10-32-2

32A 2 Pole Din Fuse Holder with indication



DIN RAIL FUSE HOLDERS (14 x 51 CERAMIC FUSE)

KCF2-51-2

63A 2 Pole Din Fuse Holder



DIN RAIL FUSE HOLDERS (10 x 38 CERAMIC FUSE)

KCF10-32-3

32A 3 Pole Din Fuse Holder with indication



DIN RAIL FUSE HOLDERS (14 x 51 CERAMIC FUSE)

KCF2-51-3

63A 3 Pole Din Fuse Holder



DIN RAIL FUSE HOLDERS (22 x 58 CERAMIC FUSE)

KCF2-58-1

125A 1 Pole Din Fuse Holder



DIN RAIL FUSE HOLDERS (22 x 58 CERAMIC FUSE)

KCF2-58-2

125A 2 Pole Din Fuse Holder

DIN RAIL FUSE HOLDERS (22 x 58 CERAMIC FUSE)



KCF2-58-3

125A 3 Pole Din Fuse Holder

*** Refer to page 36 for 10mm x 38mm Ceramic Fuses & Neutral Link**

14 x 51 CERAMIC CYLINDRICAL FUSES



- F1451-10** Ceramic Fuse 10Amps
- F1451-16** Ceramic Fuse 16Amps
- F1451-20** Ceramic Fuse 20Amps
- F1451-25** Ceramic Fuse 25Amps
- F1451-32** Ceramic Fuse 32Amps
- F1451-40** Ceramic Fuse 40Amps
- F1451-50** Ceramic Fuse 50Amps
- F1451-63** Ceramic Fuse 63Amps
- F1451-NL** Cylindrical Neutral Link


22 x 58 CERAMIC CYLINDRICAL FUSES



- F2258-10** Ceramic Fuse 10Amps
- F2258-16** Ceramic Fuse 16Amps
- F2258-20** Ceramic Fuse 20Amps
- F2258-25** Ceramic Fuse 25Amps
- F2258-32** Ceramic Fuse 32Amps
- F2258-40** Ceramic Fuse 40Amps
- F2258-50** Ceramic Fuse 50Amps
- F2258-63** Ceramic Fuse 63Amps
- F2258-80** Ceramic Fuse 80Amps
- F2258-100** Ceramic Fuse 100Amps
- F2258-NL** Cylindrical Neutral Link

To Be Used With The gG-NH & aM-NH Range Of Fuses Only On Page 39.


NEW!



100 FRAME SIZE FUSE SWITCH DISCONNECTOR

FSD000-100-1	1 Pole	For 10-100A Fuses
FSD000-100-2	2 Pole	For 10-100A Fuses
FSD000-100-3	3 Pole	For 10-100A Fuses
FSD000-100-4	4 Pole	For 10-100A Fuses


NEW!



160 FRAME SIZE FUSE SWITCH DISCONNECTOR

FSD00-160-1	1 Pole	For 125-160A Fuses
FSD00-160-2	2 Pole	For 125-160A Fuses
FSD00-160-3	3 Pole	For 125-160A Fuses
FSD00-160-4	4 Pole	For 125-160A Fuses


NEW!



250 FRAME SIZE FUSE SWITCH DISCONNECTOR

FSD1-250-1	1 Pole	For 200-250A Fuses
FSD1-250-2	2 Pole	For 200-250A Fuses
FSD1-250-3	3 Pole	For 200-250A Fuses
FSD1-250-4	4 Pole	For 200-250A Fuses


NEW!



400 FRAME SIZE FUSE SWITCH DISCONNECTOR

FSD2-400-1	1 Pole	For 315-400A Fuses
FSD2-400-2	2 Pole	For 315-400A Fuses
FSD2-400-3	3 Pole	For 315-400A Fuses
FSD2-400-4	4 Pole	For 315-400A Fuses

NEW!



630 FRAME SIZE FUSE SWITCH DISCONNECTOR

FSD3-630-1	1 Pole	For 500-630A Fuses
FSD3-630-2	2 Pole	For 500-630A Fuses
FSD3-630-3	3 Pole	For 500-630A Fuses
FSD3-630-4	4 Pole	For 500-630A Fuses

• CONFORMS TO IEC60269-2

NEW!

GENERAL PROTECTION FUSES (DOUBLE INDICATION)



gG-NH000-10	10A	General Protection Fuse
gG-NH000-16	16A	General Protection Fuse
gG-NH000-20	20A	General Protection Fuse
gG-NH000-25	25A	General Protection Fuse
gG-NH000-32	32A	General Protection Fuse
gG-NH000-36	36A	General Protection Fuse
gG-NH000-40	40A	General Protection Fuse
gG-NH000-50	50A	General Protection Fuse
gG-NH000-63	63A	General Protection Fuse
gG-NH000-80	80A	General Protection Fuse
gG-NH000-100	100A	General Protection Fuse
gG-NH00-125	125A	General Protection Fuse
gG-NH00-160	160A	General Protection Fuse
gG-NH1-200	200A	General Protection Fuse
gG-NH1-224	224A	General Protection Fuse
gG-NH1-250	250A	General Protection Fuse
gG-NH2-315	315A	General Protection Fuse
gG-NH2-355	355A	General Protection Fuse
gG-NH2-400	400A	General Protection Fuse
gG-NH3-500	500A	General Protection Fuse
gG-NH3-630	630A	General Protection Fuse

NEW!

MOTOR PROTECTION FUSES (DOUBLE INDICATION)



aM-NH000-10	10A	Motor Protection Fuse
aM-NH000-16	16A	Motor Protection Fuse
aM-NH000-20	20A	Motor Protection Fuse
aM-NH000-25	25A	Motor Protection Fuse
aM-NH000-32	32A	Motor Protection Fuse
aM-NH000-36	36A	Motor Protection Fuse
aM-NH000-40	40A	Motor Protection Fuse
aM-NH000-50	50A	Motor Protection Fuse
aM-NH000-63	63A	Motor Protection Fuse
aM-NH000-80	80A	Motor Protection Fuse
aM-NH000-100	100A	Motor Protection Fuse
aM-NH00-125	125A	Motor Protection Fuse
aM-NH00-160	160A	Motor Protection Fuse
aM-NH1-200	200A	Motor Protection Fuse
aM-NH1-224	224A	Motor Protection Fuse
aM-NH1-250	250A	Motor Protection Fuse
aM-NH2-315	315A	Motor Protection Fuse
aM-NH2-355	355A	Motor Protection Fuse
aM-NH2-400	400A	Motor Protection Fuse
aM-NH3-500	500A	Motor Protection Fuse
aM-NH3-630	630A	Motor Protection Fuse

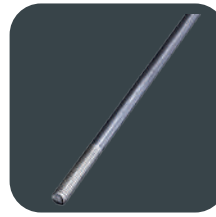
PROBES & PROBE HOLDERS TO MONITOR THE LIQUID LEVELS IN TANKS, RESERVOIRS, ETC.



PROBE HOLDER

PS-3

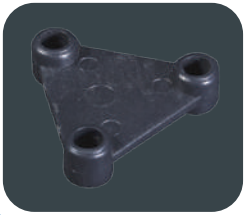
Probe holder



PROBE

SSP-3

1m Stainless Steel probe - 5mm ϕ



PROBE ACCESSORIES

P-SPACER

Probe Spacer



PROBE ACCESSORIES

P-Extension

Probe Extension - locknut

FLOAT SWITCHES USED FOR TANK, RESERVOIR APPLICATIONS & WATER APPLICATIONS



FLOAT SWITCH

UKY-70-AB

Float Switch + weights
Micro Switch 250V AC



FLOAT SWITCH

UKY-2-5M

Float Switch + 5m cable +
weight
Micro Switch 250V
AC



FLOAT SWITCH

UKY-2-10M

Float Switch + 10m cable +
weight
Micro Switch 250V
AC

FIREMAN SWITCHES - SUITABLE FOR EMERGENCY CUT-OFF OF OUTDOOR SIGNAGE & LIGHTING IN THE EVENT OF A FIRE

The switch is activated by a pole operated ring-handle that locks automatically in the OFF position. A spring-loaded locking pin prevents the unit being switched on accidentally.

*AC-23: Switching Motors and other highly inductive loads (Occasional Operation)



SPECIFICATIONS - FIRE MAN SWITCHES

Aluminium enclosure	Size: 156 x 106 x 81mm
Colour: Red	IP65
Handle: Galvanised Steel	Earth screw provided
Stainless Steel Screws	5 x 15mm
Properties of the aluminium alloy ALSi9Cu EN-47100 Cu < 1% (ex UNI 5079)	Ultimate tensile strength: 23 +27 kg/mm ²
Specific weight 2.65kg/dm ³	Heat Conductivity at 20°C: 0,37 cal/cm sec°C
Brinell hardness: 75 + 95	Cold Resistance: -100
Heat Resistance °C: +300	

2 POLE FIREMAN SWITCHES

SFS2-20 20 Amps 230V AC23

3 POLE FIREMAN SWITCHES

SFS3-16 16 Amps 400V AC23